

IPP Demonstration Sites Project

*Family and community
engagement:
Brinnon K-8*



Brinnon School District
Home of the Bobcats

UNIVERSITY *of* WASHINGTON

HARING CENTER
FOR INCLUSIVE EDUCATION



Demonstration Sites Project Overview

Goal: provide WA educators the opportunity to observe inclusionary practices in action, meet with school teams, access resources, and learn about how to implement inclusionary practices in different school contexts.

>16 K-12 demonstration sites across the state of WA

>Project Initiatives:

- Provide demo sites with PD and continued learning experiences
- Showcase and disseminate information on high leverage inclusionary practices to WA educators
- Connect demo sites with other WA schools in a way that promotes collaboration and yields actionable inclusion change.



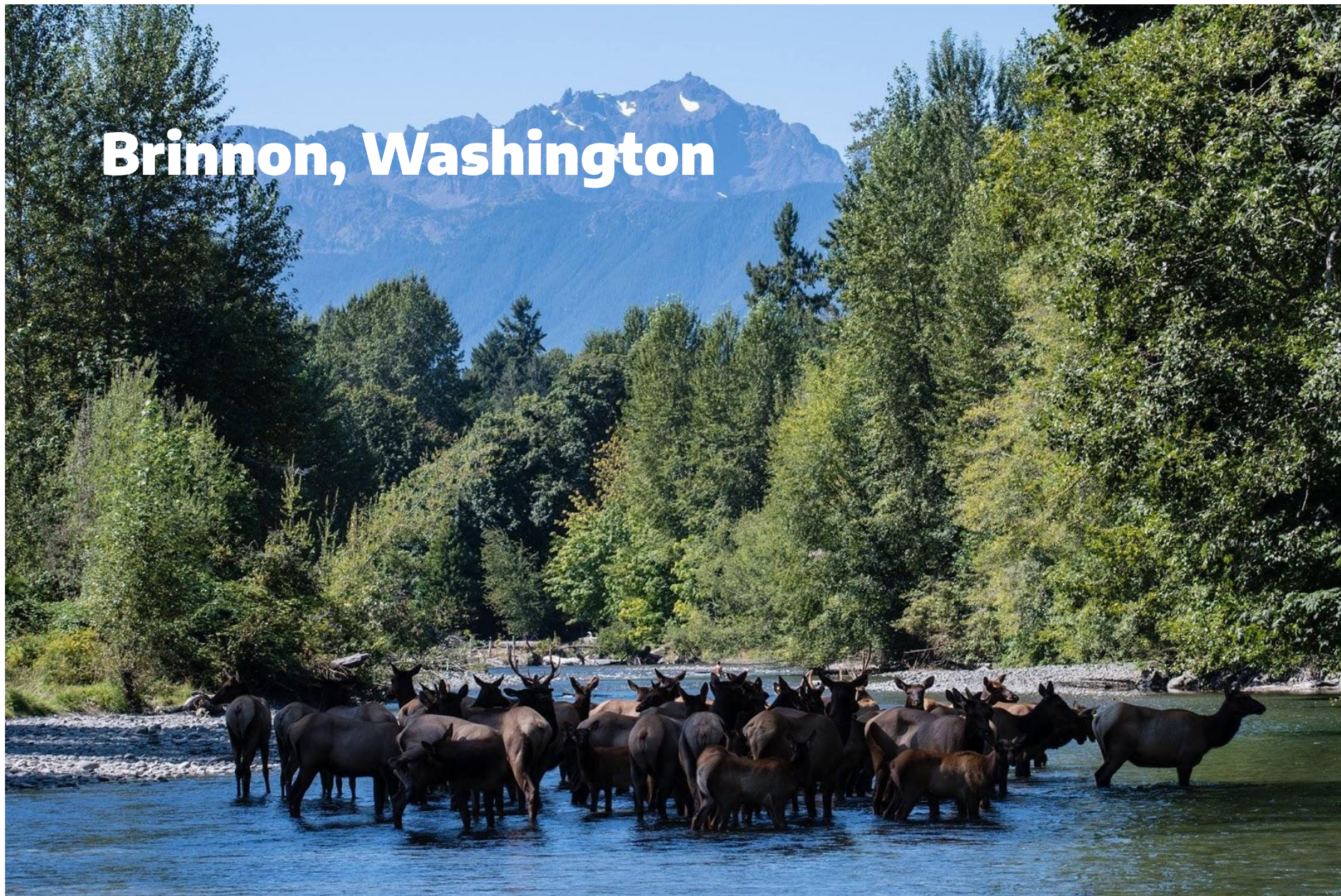
IPPdemosites.org

W

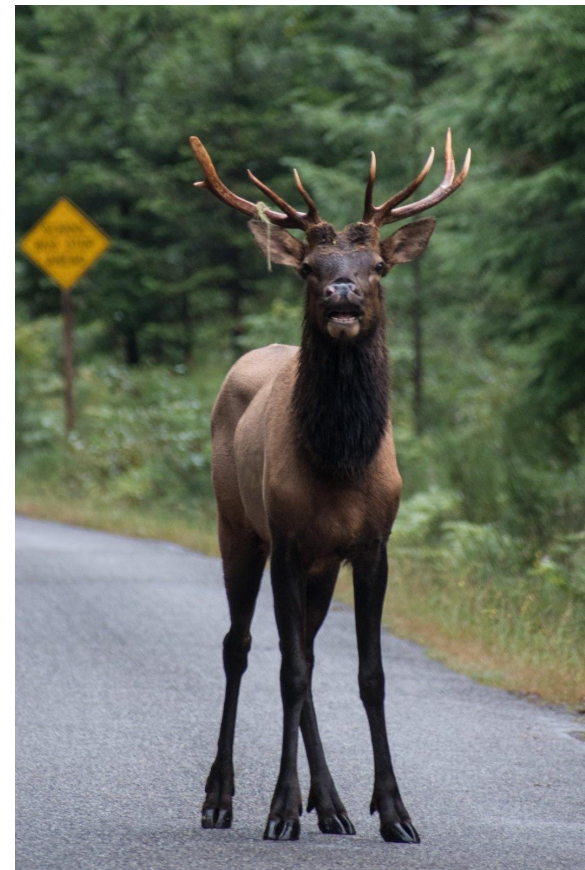
In ONE word, what are the systems, culture, and/or leadership practices you heard about today that support inclusive schools?

collaborative belonging
grit family inspiring
beauty awesome love
empathy heart
expectations collaboration

Brinnon, Washington



Brinnon, Washington



The Brinnon School

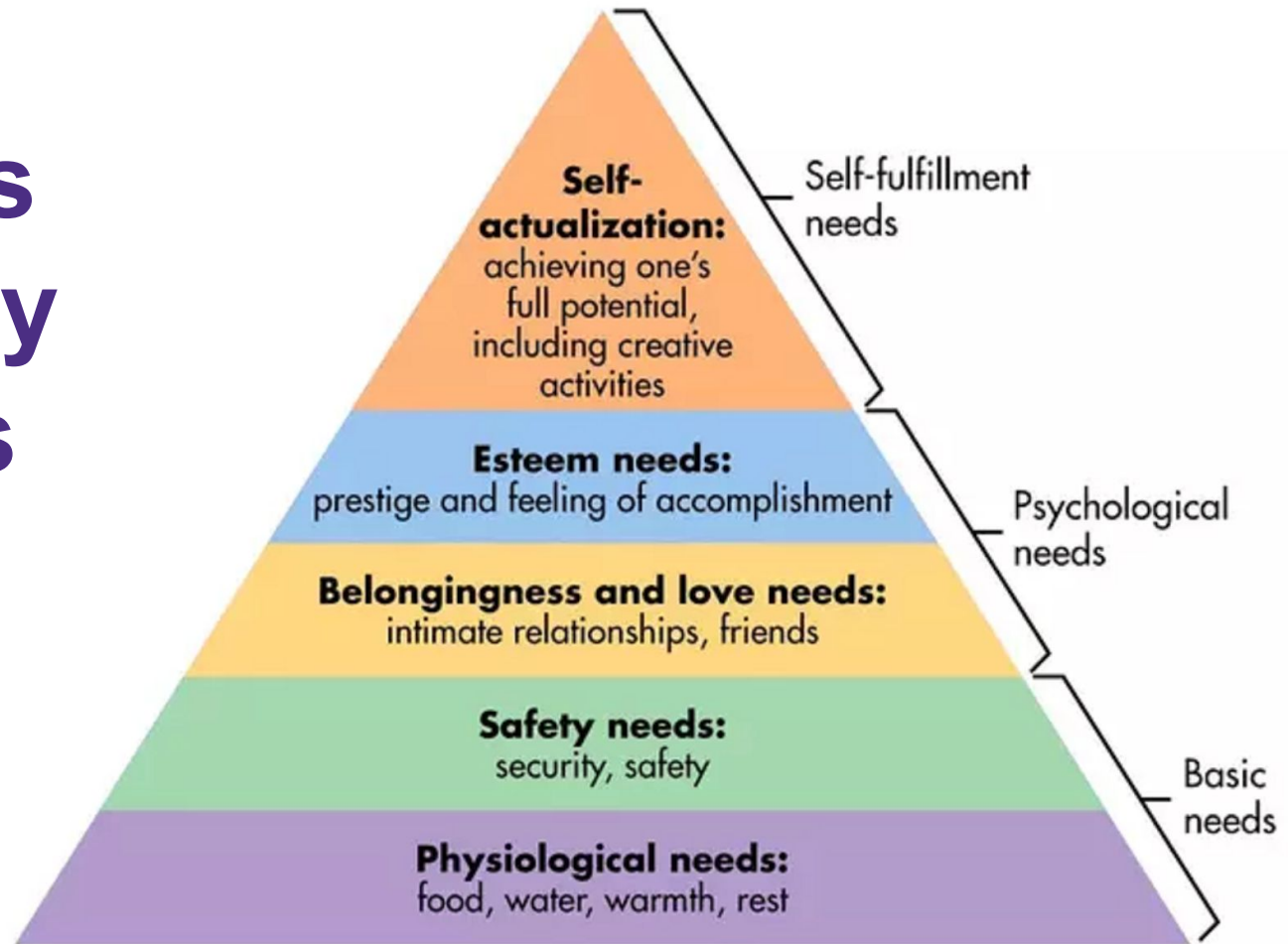


Brinnon School - COVID-19



Students Engaged in Core Content: Students ready to learn

Maslow's Hierarchy of Needs



Family and Community Partnerships- Building community



Family and Community Partnerships - Jefferson County, here we are!



MCS Counseling



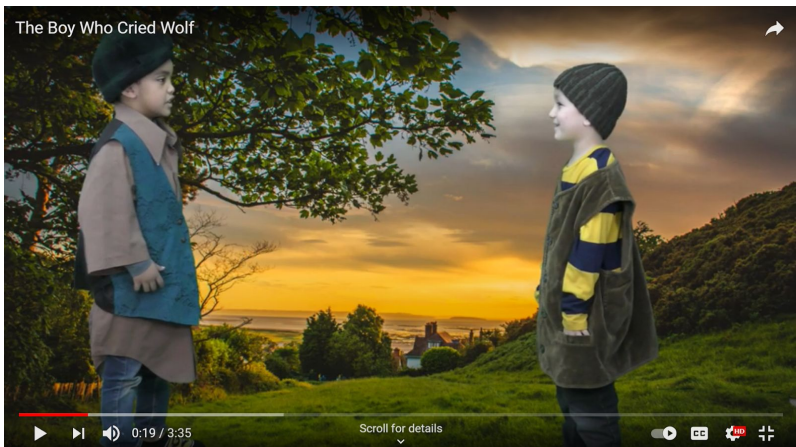
jumping mouse
CHILDREN'S CENTER



WASHINGTON STATE
UNIVERSITY
EXTENSION



Family and Community Partnerships - Enriching the classroom experience



Family and Community Partnerships: Community culture goes beyond the classroom



Flexible Services: Bringing experiences in



Bricks 4 Kids



Traveling Lantern-"Pinocchio"



Burke Museum



PSC Planetarium

Flexible Service Delivery: Counseling services



Play therapy for very young

*"Toys are children's words
and play is their language"
- Gary L. Landreth*

*Standard counseling
for older students*



Questions:

1. Start by telling me quickly about Brinnon and the district you're in. How accessible are resources in your community?
2. What are some ways you bring community resources in?
 - a. How is that relationship reciprocated?
3. How have community resources allowed you to build inclusive systems and structures in your community?
4. What impact have you seen your partnerships have on your inclusive culture?
5. I'd love to hear about how the students and families are involved in and respond to some of these efforts.
6. In terms of advice for other schools: where would you recommend starting efforts in this area?



Thanks to our partners



OSPI



Brinnon School District
Home of the Bobcats