

# Demonstration Sites Project

## Virtual Site Visit

### *Hood Canal Preschool*

---

UNIVERSITY *of* WASHINGTON

HARING CENTER  
FOR INCLUSIVE EDUCATION





Cassie Martin, PhD  
UW Haring Center  
Inclusion Specialist  
LEAD Demo Sites Project



Ilene Schwartz, PhD,  
BCBA-D  
Director UW Haring  
Center



Katy Bateman, PhD,  
BCBA-D  
UW Haring Center  
Inclusion Specialist



RinaMarie Leon-Guerrero,  
PhD, BCBA-D  
UW Haring Center  
Inclusion Specialist



Jill Locke, PhD  
UW Research  
Assistant Professor  
Implementation Scientist  
Speech & Hearing



Molly Lyman  
UW Haring Center  
Program Coordinator



Naomi Fair, MEd  
Inclusion Specialist



Christina Nowak, MEd  
Inclusion Specialist



Jessica Flaherty, BCBA  
Inclusion Specialist



Monique Worthy, MEd  
Inclusion Specialist

# Getting Started

---

- **Connection to Audio**
- **Sound Check**
- **Ready to participate**
- **Webinar Etiquette**

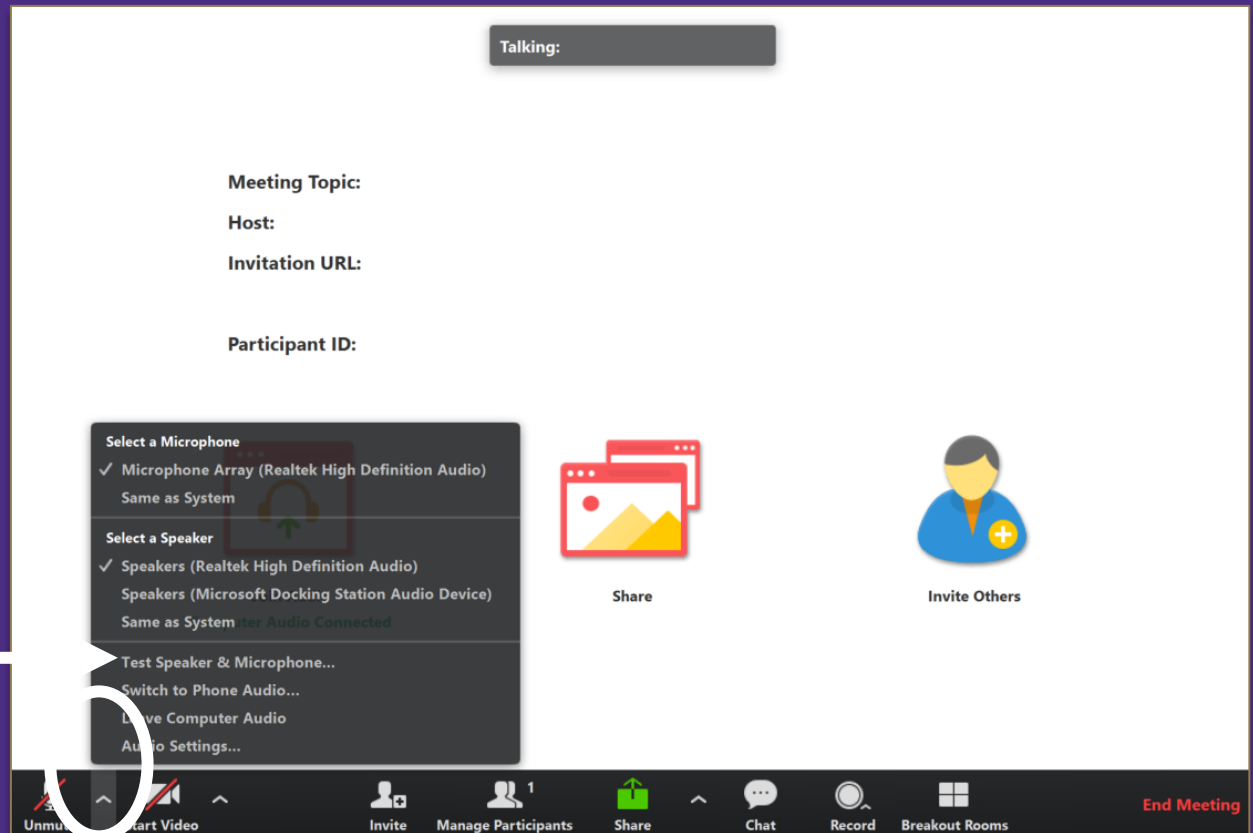


# Sound Check

We're going to get started in a few minutes.

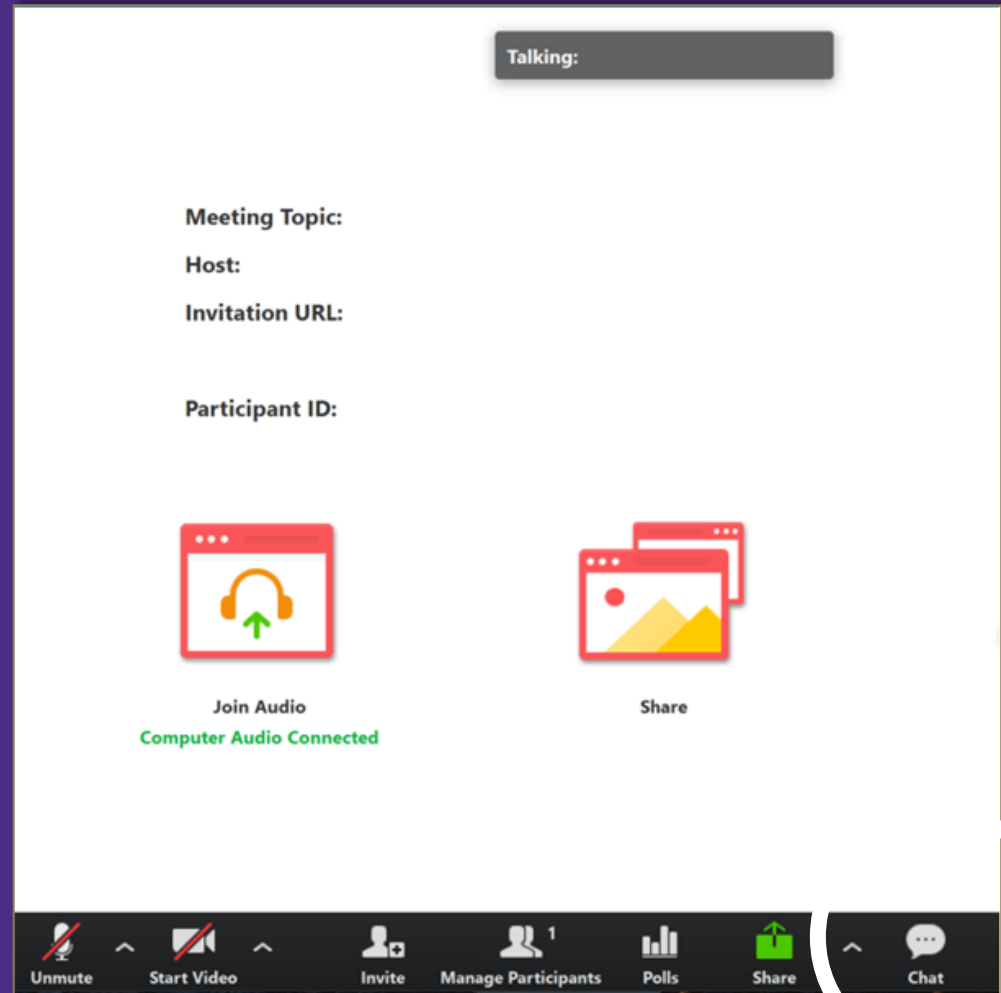
Let us know you can hear us in the chat!

Test Audio



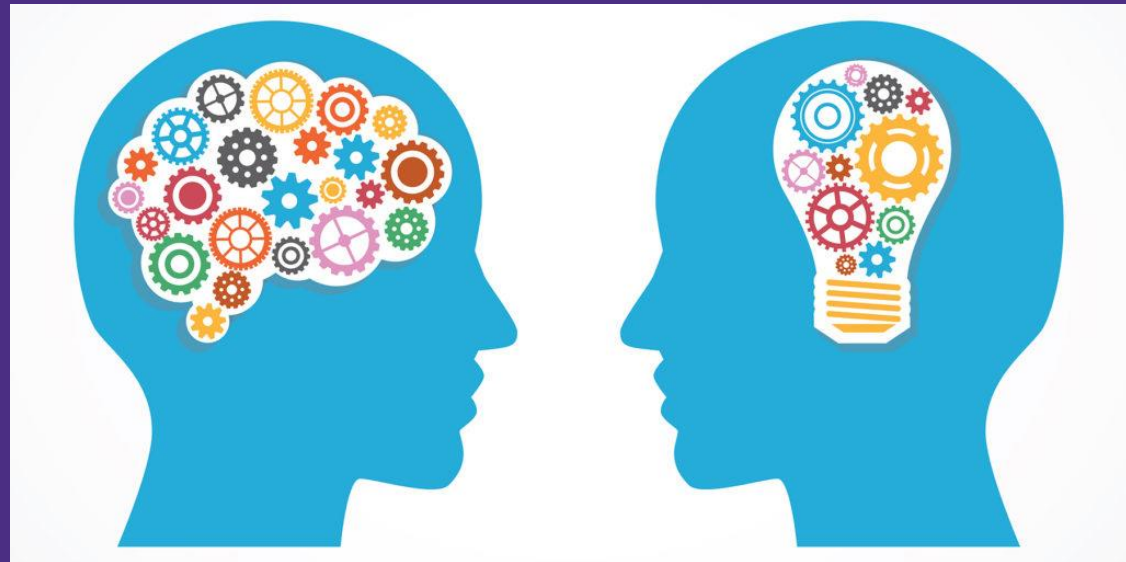
# How to participate

- > Share comments and ideas in the Chat panel (send to “All”)
- > Ask presenters questions in the Q&A panel
- > Recording will be available at the end of the month.



# Webinar Etiquette

- Keep an open mind.
- Be an active participant.



# Practice the Chat

---

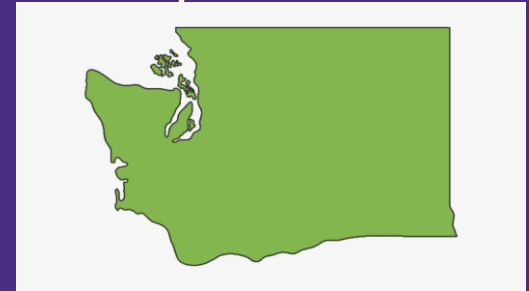
- > **What are you hoping to hear about today? Please put in the chat what impact you hope today's webinar will have on your schools inclusionary practices.**



# Demonstration Sites Project Overview

---

> 4 demonstration sites across the state of WA will be selected over the course of the next two years.



> Demonstration sites will:

- Serve as model sites for best practices in inclusive education.
- Showcase implementation of high leverage practices.
- Invite and host members of the community to see practices in action.
- Continue to build inclusive culture by refining practices.
- Increase equitable learning for all students.



# Founding Principles

---

- > **Inclusion is a cultural initiative.**
- > In every school, there are effective practices and supports that can work for all students.
- > All schools are on a path of continuous improvement.
- > Outcomes of implementation of best practices transfers to planning and development in our own learning environments.
- > Strong sustainability is promoted through strong partnerships with key stakeholders.
- > Innovative site-based leadership leads to increased effectiveness.

# Questions and Polling 1

---

## Who's here?

- Administrator
- Counselor
- Teacher
- Parent
- ESD
- District
- Specialist
- Community Based Organization
- Paraprofessional
- Other

# Who is presenting today?

---



**Cathy Carlson**  
Hood Canal School District  
Preschool Inclusion Teacher  
[ccarlson@hoodcanalschool.org](mailto:ccarlson@hoodcanalschool.org)

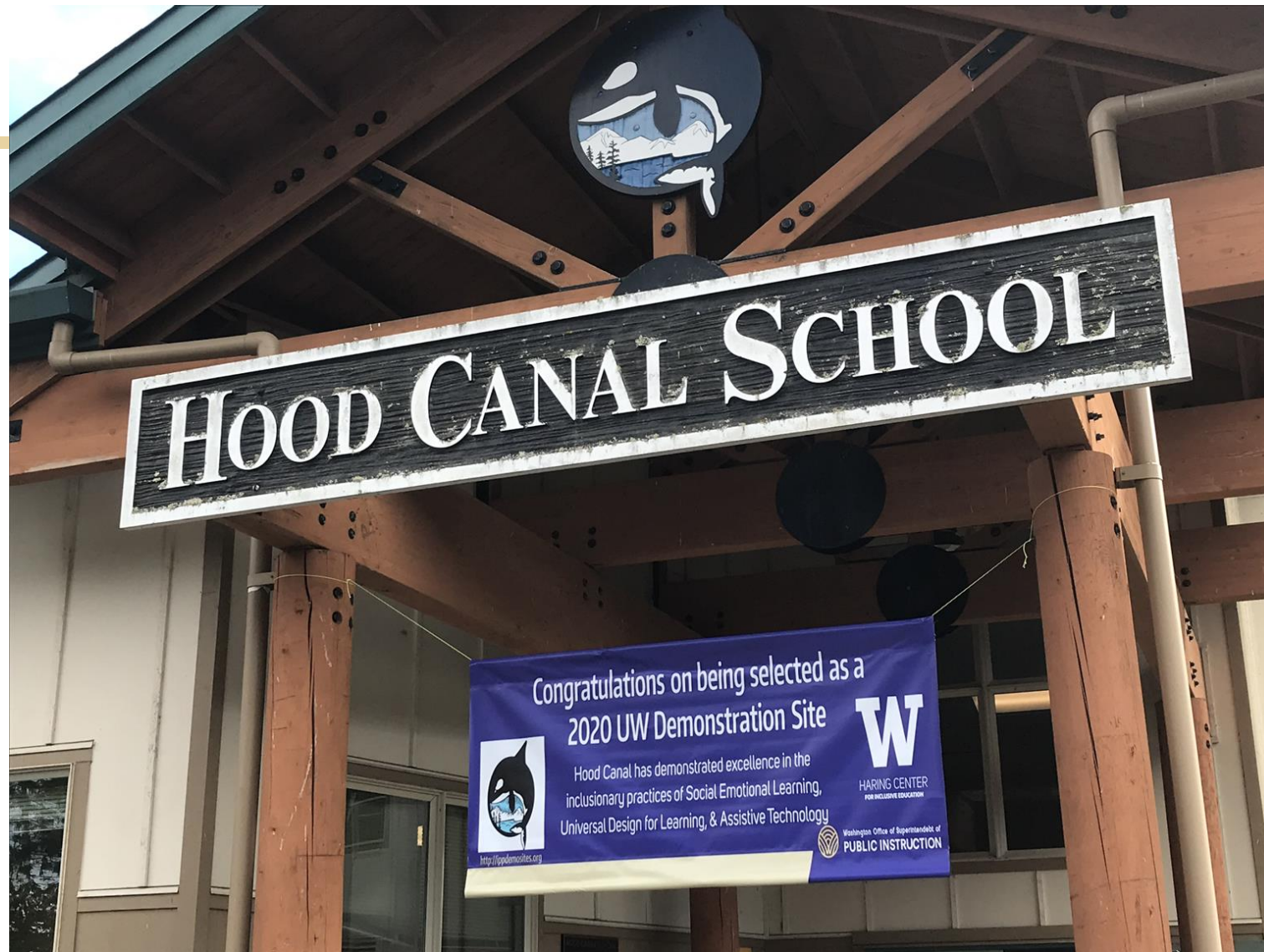


**Katie Kent**  
Hood Canal School District  
Director of Special Education and  
Student Services  
[kkent@hoodcanalschool.org](mailto:kkent@hoodcanalschool.org)

# SKOKOMISH

## Native American Tribe *SqWuqWu'b3sh "People of the River"*





# Vision

Imagine a world where *every* adult had received the:



# Vision

Imagine a world where *every* adult had received the:

- love



# Vision

Imagine a world where *every* adult had received the:

- love
- support





# Vision

Imagine a world where *every* adult had received the:

- love
- support
- empathy



# Vision

Imagine a world where *every* adult had received the:

- love
- support
- empathy
- respect



# Vision

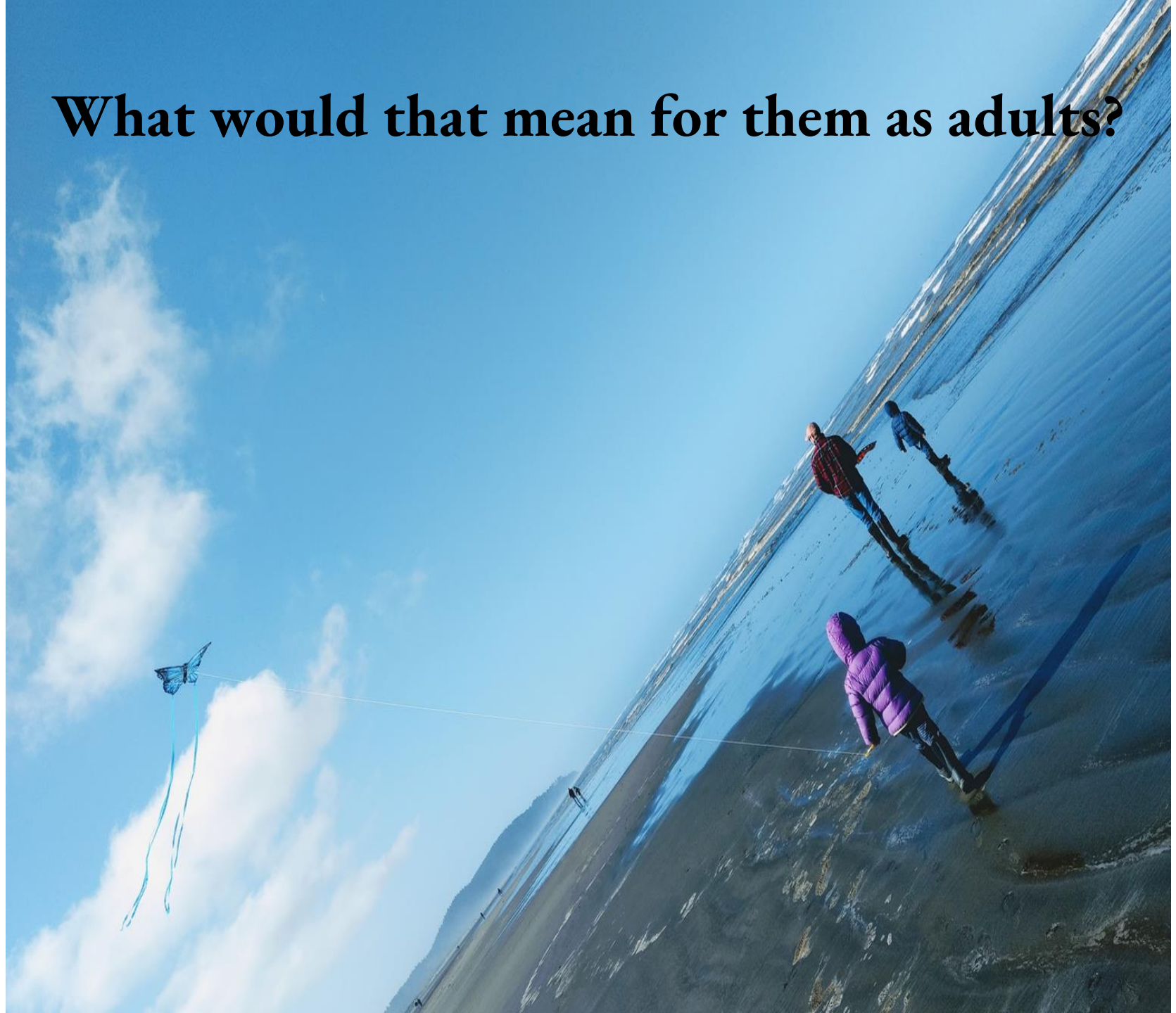
Imagine a world where *every* adult had received the:

- love
- support
- empathy
- respect

that they needed in childhood.



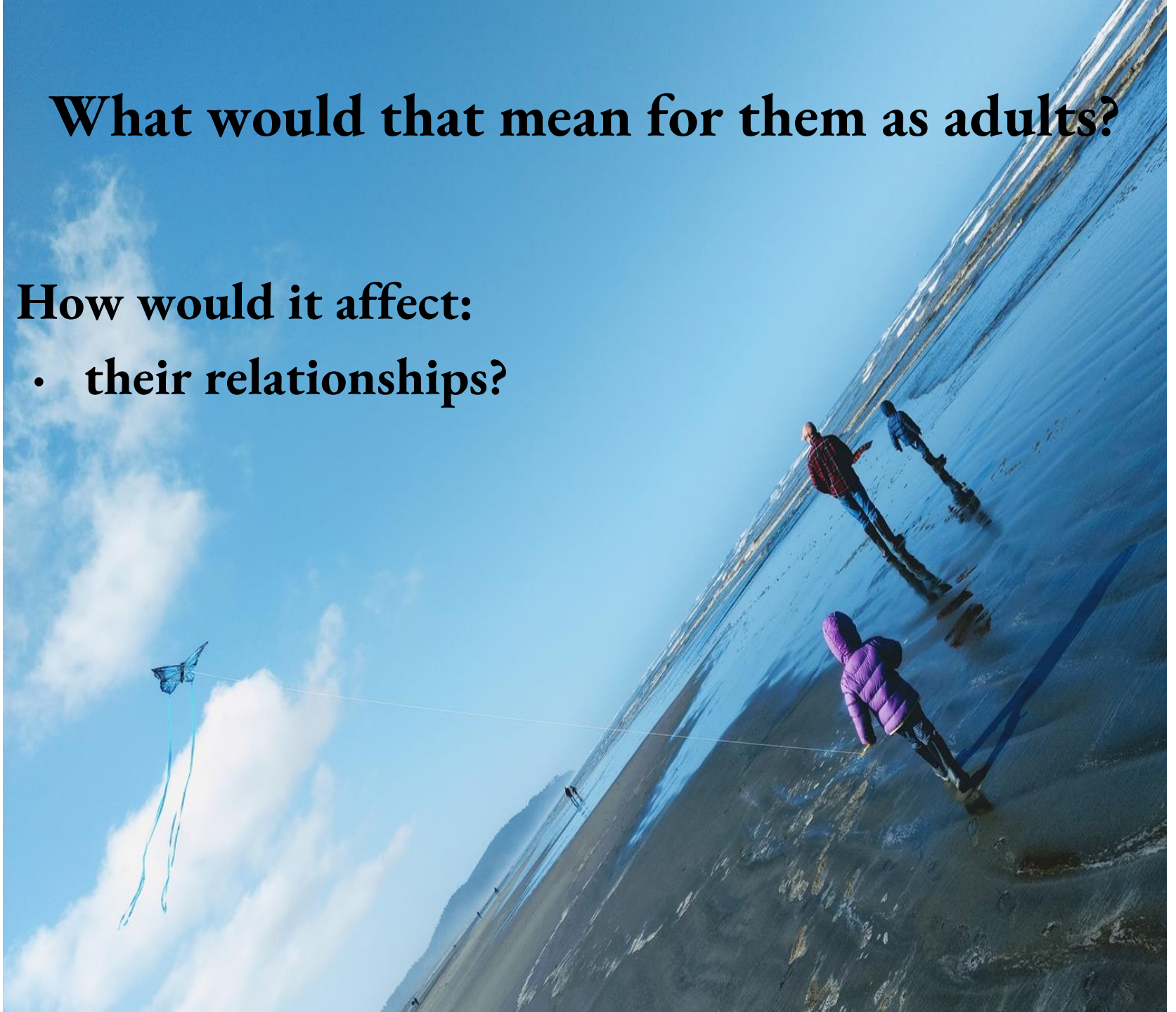
**What would that mean for them as adults?**



**What would that mean for them as adults?**

**How would it affect:**

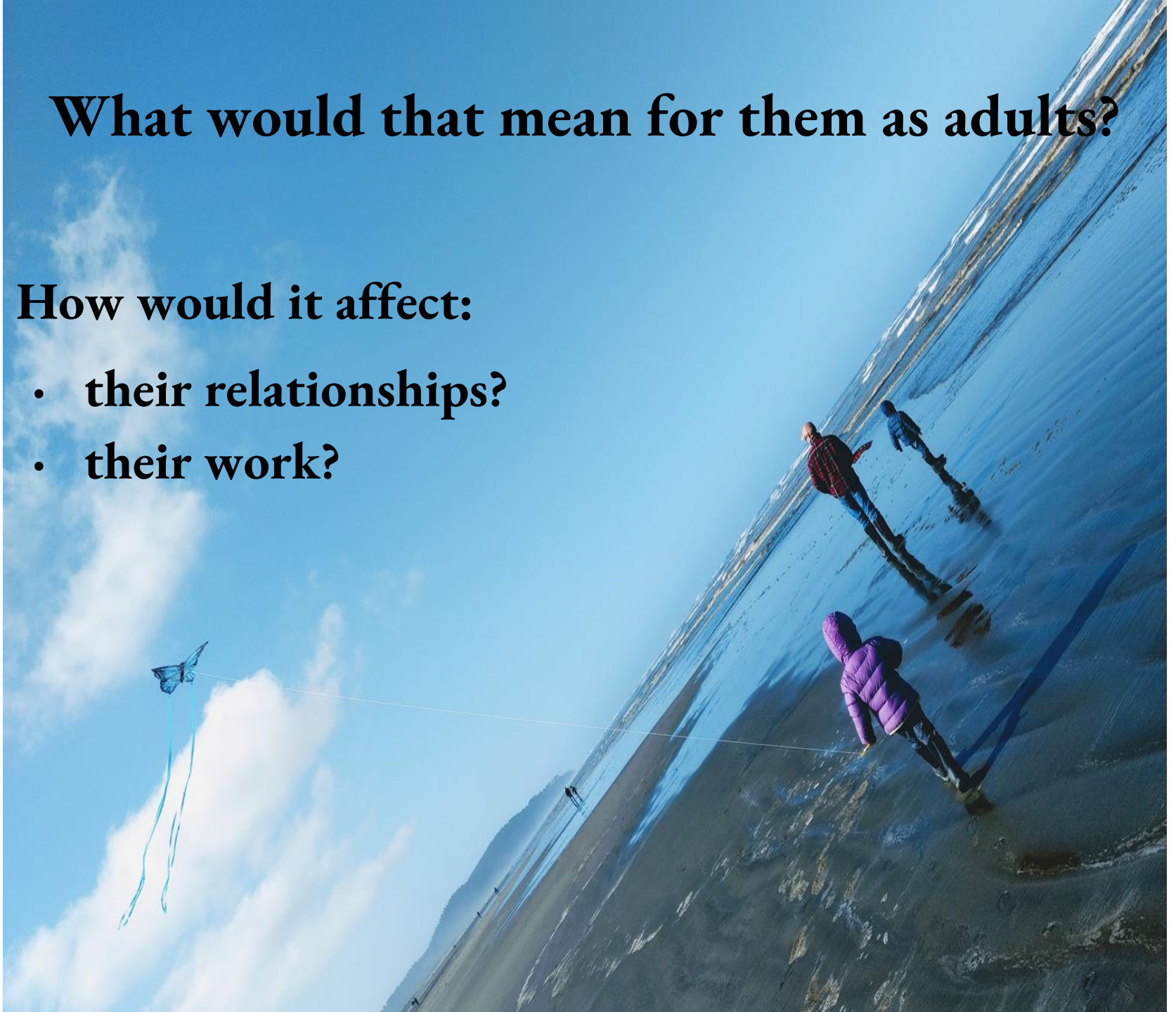
- **their relationships?**



# What would that mean for them as adults?

## How would it affect:

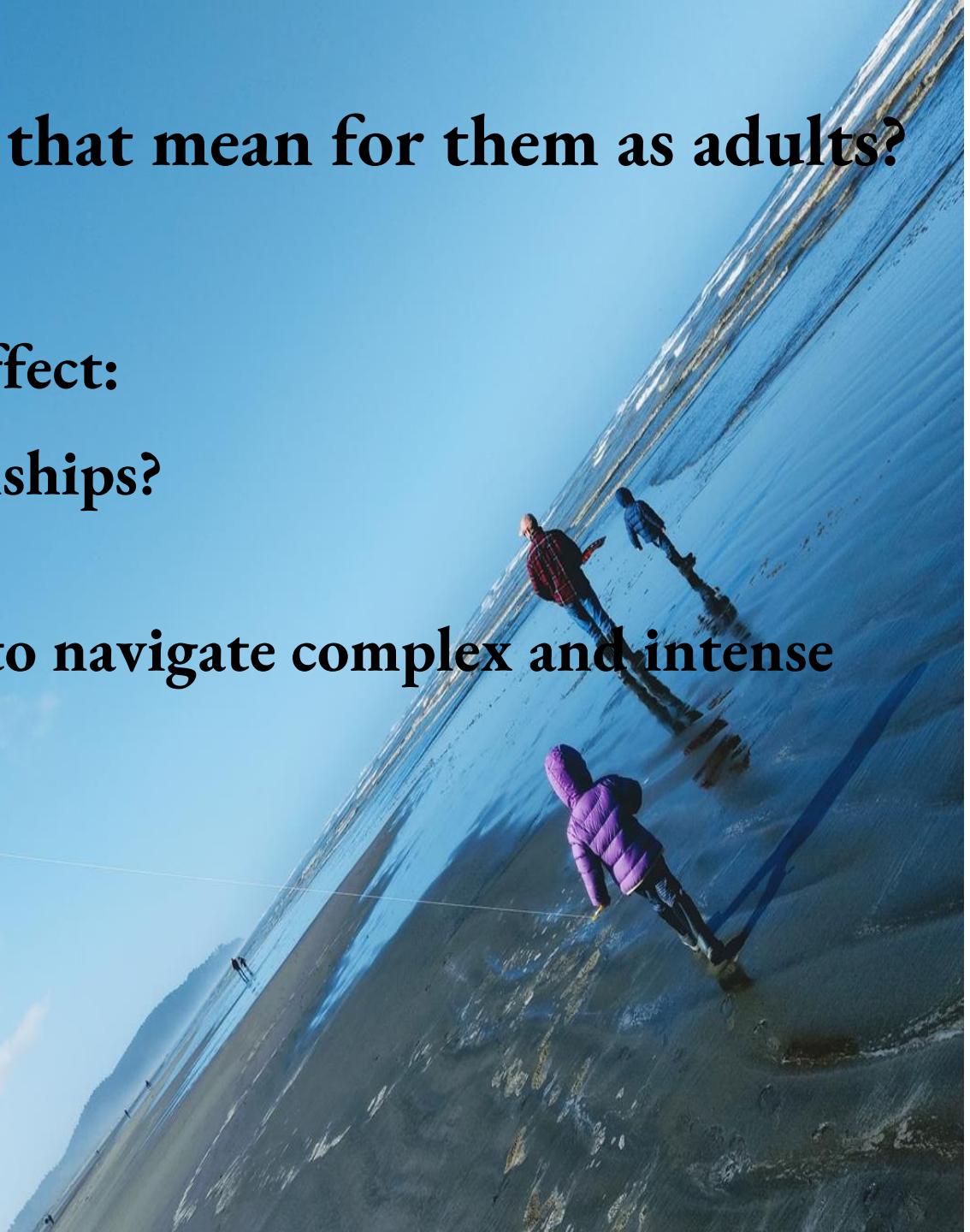
- their relationships?
- their work?



# What would that mean for them as adults?

How would it affect:

- their relationships?
- their work?
- their ability to navigate complex and intense emotions?



The journey begins with **INCLUSION.**





# Eye of the Tiger

---



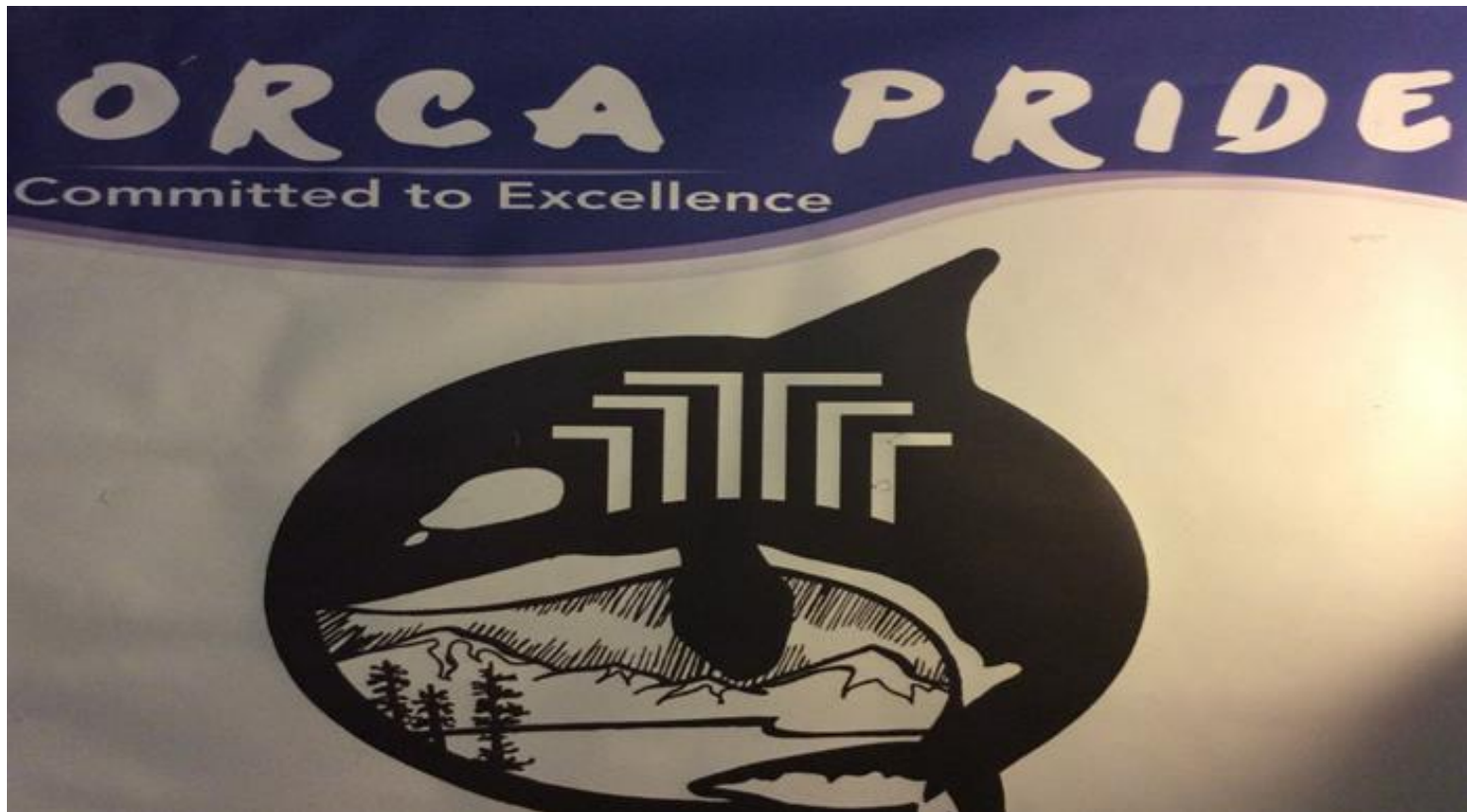
# Our Timeline 2014-2015

## September 2014 to September 2015

- Research successful programs
- Plan with ESD 113 Special Ed/ Early Learning Administrator
- Attend Haring Center Pre-K Inclusion workshop
- Enhance community awareness
- Adjust Title One Special Education Funding
- Open the Hood Canal Pre-K Inclusive Hood Canal



# Whale Come to Hood Canal Inclusive Preschool



# The Myth of Inclusion



# The Development of the Hood Canal Preschool

## September 2015 to Current

- Developed and Implemented the Caregivers Learning Circle
- ESD 113 Demo Site - State System Improvement Plan (SSIP)
- GL.A.D. Teaching Strategies Implemented
- UDL Professional Development
- SEL Professional Development
- Pre-K Inclusive Collaboration Team (P.I.C.T.)
- Awarded Pre-K Inclusion Champions I-Grant
- Best Mentorship Certification
- Best Coaching Practices
- S.T.A.R.S.
- P.B.I.S. Workshop and On-Campus Training



# All Students Benefit from An Inclusive Environment



# Inclusionary Practices

“Noodles” is our Therapy Dog



# Current Inclusionary Practices

---

- **Community Involvement: Community Caregivers Learning Circle**
- **Universal Design Of Learning (UDL)**
- **Social Emotional Learning, (SEL)**
- **Assistive Technology**
- **Guided Language Acquisition of Learning (GLAD)**



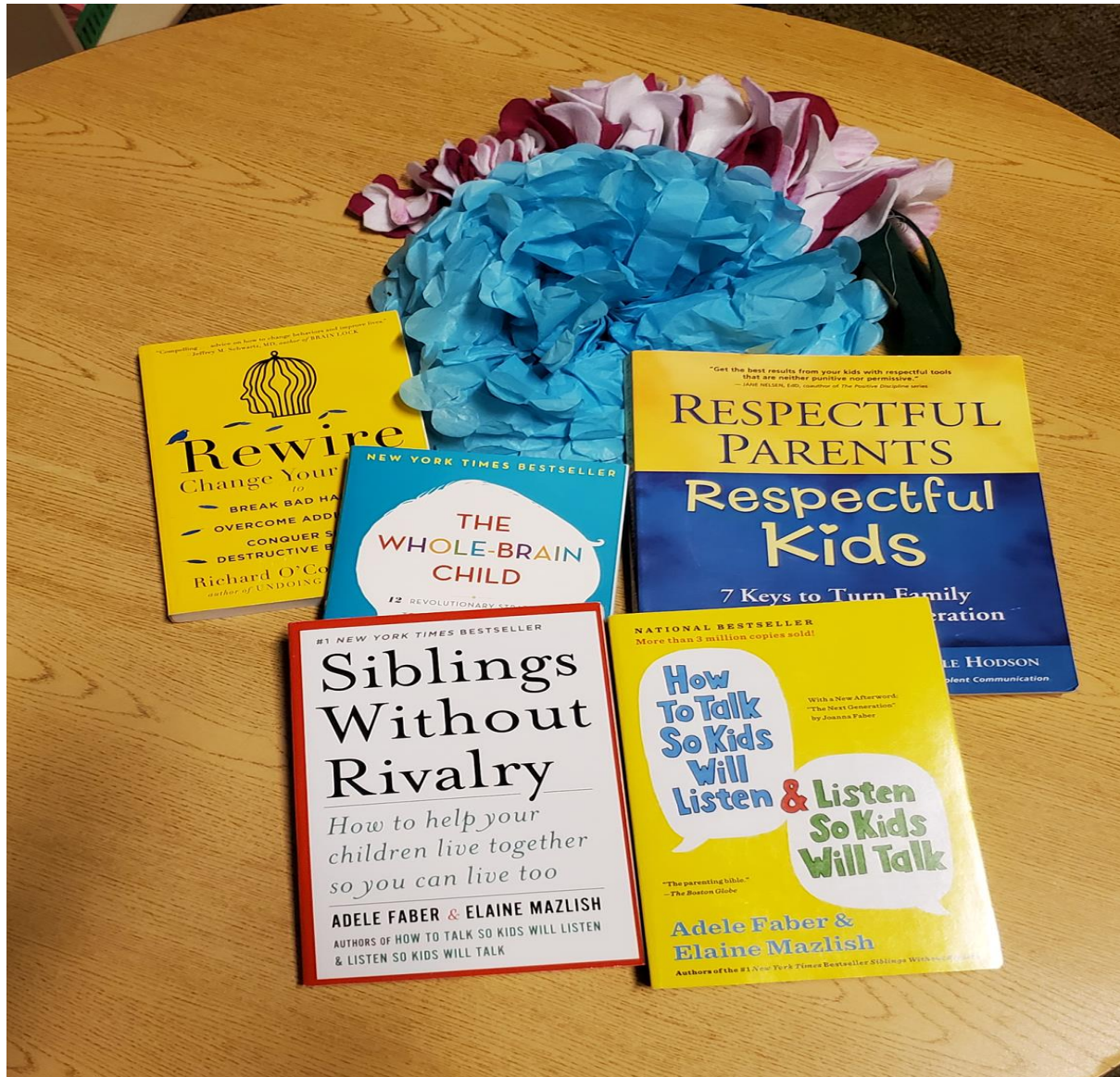


# Caregivers Community Learning Circle

---



# Current Resources Utilized by Caregivers at the Community Learning Circle



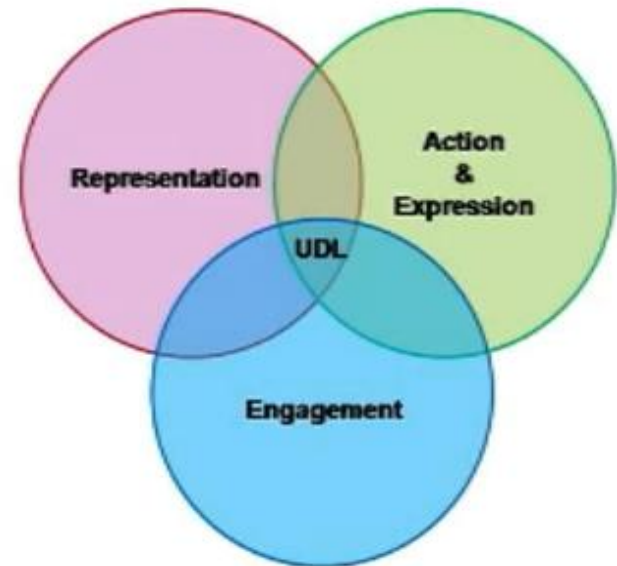
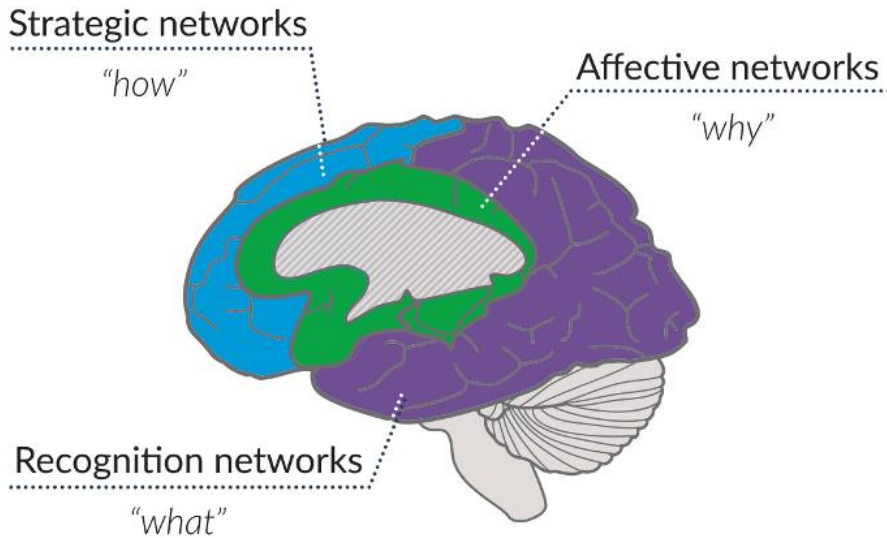
# Universal Design for Learning

---



# Universal Design for Learning Principles

- Multiple Means of Representation - “what”
- Multiple Means of Action & Expression - “how”
- Multiple Means of Engagement - “why”



**UDL Principles**

INSPIRED BY A PUBLIC SCHOOL STUDENT WITH DISABILITIES



CLEARING A PATH  
FOR PEOPLE WITH SPECIAL NEEDS  
CLEARS THE PATH FOR EVERYONE!

# Social Emotional Learning (SEL)

## Tools & Strategies For Success

- Feeling Buddies
- PBIS (Timmy the Turtle)
- Feeling Sticks
- Child(ren) negotiate



# Feeling Sticks



# Feeling Buddies





# Feelings Negotiation



# Assistive Technology

- **S.M.A.R.T. Board**
- **Picture Exchange Communication System**
- **Guided Language Acquisition Design for Learning**
- **Guided Language Acquisition Design for Learning (G.L.A.D.)**
- **Q.U.I.L.S (Quick Interactive Language Screener)**
- **Brookes Education (Jungle Friends and Forest Friends)**
- **Teaching Strategies GOLD**



# Guided Language Acquisition Design G.L.A.D.

---



# Hood Canal Inclusionary Program

---

- **Free High Quality Inclusive Preschool**
- **Students Learn Pre-Academic**
- **Problem Solving Skills**
- **Focused Play**
- **Creative Curriculum**
- **Provide Opportunities for Choice**
- **Celebrate Diversity**



# Develop the Whole Child

---

## Self-Determination

- **Choice Making**
- **Decision Making**
- **Goal Setting**
- **Problem Solving**
- **Self-Regulation**
- **Self-Advocacy**
- **Self-Awareness**



# Continuous Path of Improvement

---

- **Inclusionary Practices Project and ESD 113 Support**
- **Continued development of early learning department PLC**
- **Deep dive into high leverage practices in special education**
- **Co-teaching and co-planning around master scheduling to support inclusion**



# Moving Forward: Future Vision

- ***Expanding our knowledge and implementation of UDL and Inclusionary Practices PreK-8 through:***
  - Common district mission and vision
  - Common goals
  - Collaboration
  - Targeted professional development
- ***Improving Individual Education Program Development through:***
  - Improved present level and goal writing aligned with common core state standards and the general education curriculum.
  - Increased opportunities for special education and general education collaboration.
  - Increased opportunities for input and participation in IEP development for parents and student.
- ***Multi-year plan for inclusive playgrounds***



# Inclusive Playground Plan

Consider Safety and ADA  
Accessibility Rating



Athan Downs UAP  
November 3, 2014 53594-1-4

Estimated manufacturing time: 4 weeks from the time of LSI order acceptance.

lsr  
landscape  
structures

Better playgrounds.  
Better world.®  
playtisi.com

Proudly presented by:

lsr  
landscape  
structures

Consider Examples from Other Schools and  
Consider Staggered Implementation





# Hood Canal Inclusion Success Testimonials

---

**Parent - Ember Ghianully**

**Grandparent- Christie Hawkins**

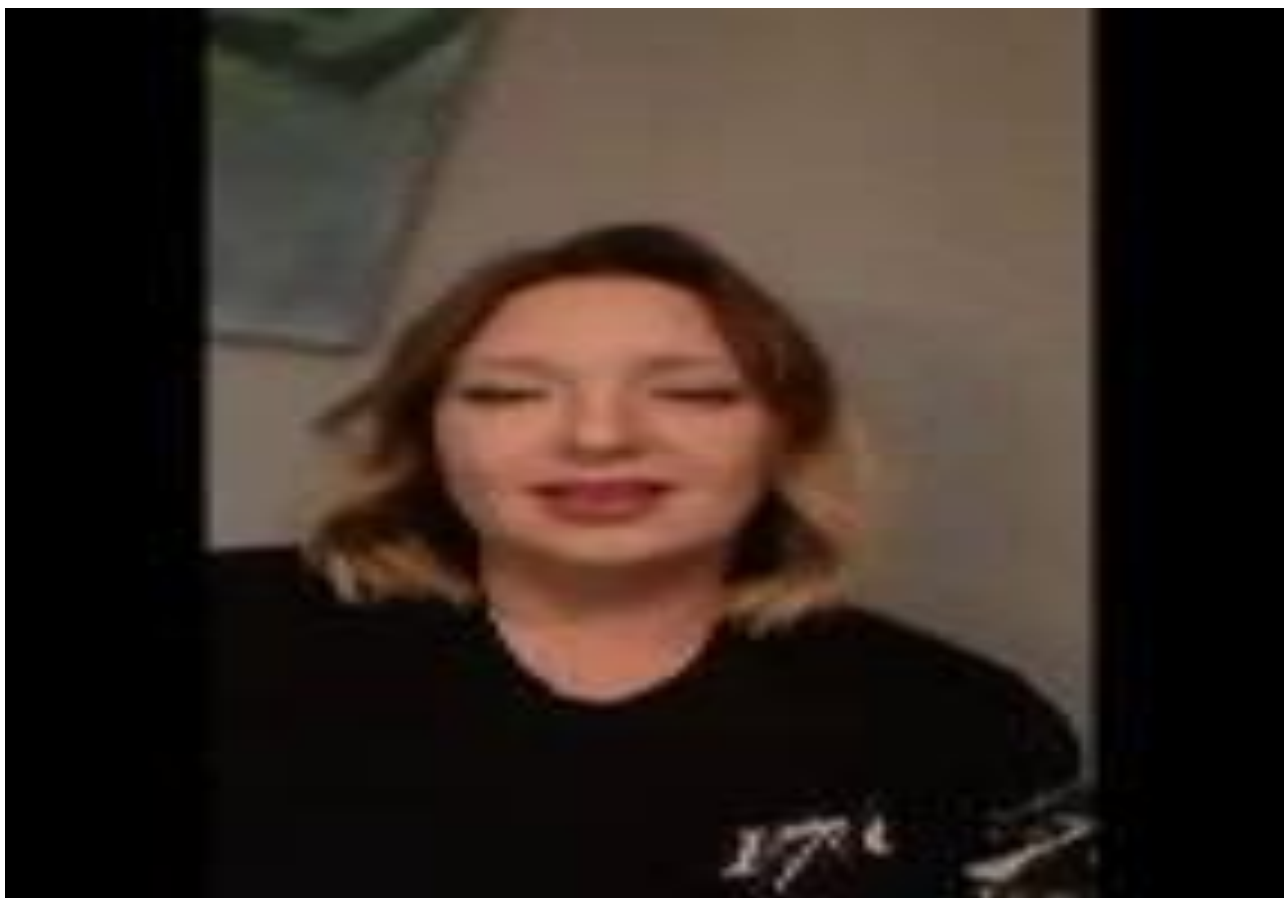
**Parent- Jimmy Harris**

**Principal- Vernon Bruni**



# Parent - Ember Ghianully

---



# Grandparent - Christie Hawkins



# Parent - Jimmy Harris

---



# Principal - Vernon Bruni

---



# Resources/Artifacts

## Text Resources

- Council for Exceptional Children. (2015). **Special education professional ethical principles and practice standards.**
- Edyburn, D. L. (2013). *Inclusive technologies: **Tools for helping diverse learners achieve***
- Elliott, S. N., & Gresham, F. M. (2008). **Social skills improvement system: Intervention guide.**
- McLeskey, J., Barringer, M-D., Billingsley, B., Brownell, M., Jackson, D., Kennedy, M., Lewis, T., Maheady, L., Rodriguez, J., Scheeler, M. C., Winn, J., & Ziegler, D. (2017, January). **High-leverage practices in special education. Arlington, VA: Council for Exceptional Children and CEEDAR Center.**

## Website Resources

- Ash, S. L., & Clayton, P. H. (2004). [The articulated learning: An approach to guided reflection and assessment.](#)
- **Center for Universal Design**, North Carolina State University: [www.ncsu.edu/project/design-projects/udi](http://www.ncsu.edu/project/design-projects/udi)
- **Goalbook Toolkit:** <https://goalbookapp.com/toolkit-info/>
- Skokomish Native American Tribe Images: <https://www.skokomish.org/>

## Landscape Structures and Inclusive Preschool Design:

- [www.playsi.com](http://www.playsi.com)
- Elementary Example <https://www.playsi.com/en/commercial-playground-equipment/playgrounds/athan-downs-park/>
- **Bond-In Place (PebbleFlex 2.0) Surface Brochure** <http://viewer.zmags.com/publication/d51f8d2b#/d51f8d2b/3>



# Preschool Inclusion Champions

---

**We are ALL the Champions**

**Humble Heart**

**The Journey Is On Going**

**Small Steps Make Great Changes**



We are ALL the champions





---

***“Do the best you can until  
you know better. Then when  
you know better, do better.”***

***-Maya Angelou***

# Contact us

---



**Cathy Carlson**  
Hood Canal School District  
Preschool Inclusion Teacher  
[ccarlson@hoodcanalschool.org](mailto:ccarlson@hoodcanalschool.org)



**Katie Kent**  
Hood Canal School District  
Director of Special Education and  
Student Services  
[kkent@hoodcanalschool.org](mailto:kkent@hoodcanalschool.org)

W

**In ONE word, what are the systems, culture, and/or leadership practices you heard about today that support inclusive schools?**



# Evaluation and Clock Hours

---

## Google Form

<https://forms.gle/QVvu7NRsV2s9vMsM7>



# To learn more about the Demonstration Sites Project

---

Please visit:

- > <https://www.selahschools.org/Domain/13>
- > <https://haringcenter.org/pdu-demo-sites/>
- > <https://www.k12.wa.us/policy-funding/special-education-funding-and-finance/inclusionary-practices-professional-development-project>
  
- > Or email, [uwdemosites@uw.edu](mailto:uwdemosites@uw.edu)

# Thanks to our partners

---



**OSPI**

