

## Lowell Elementary School Seattle Public Schools

### BACKGROUND

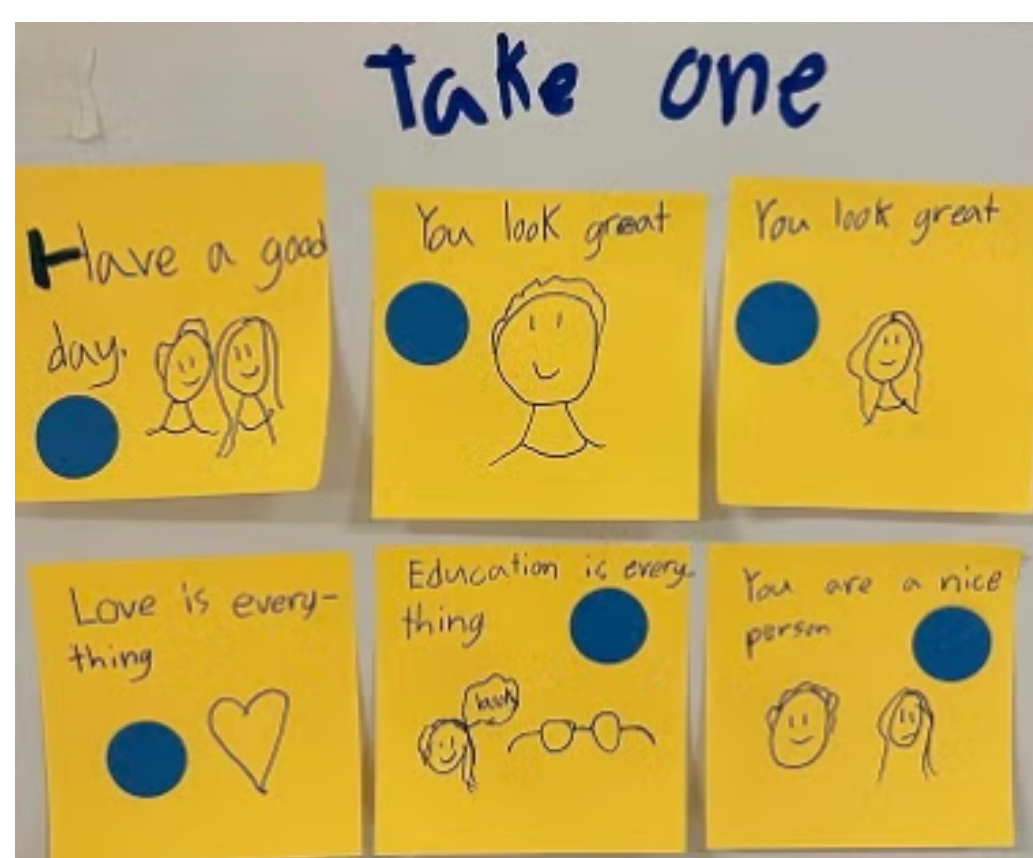
Lowell Elementary (Seattle Public Schools) joined as an IPTN Demonstration Site in 2024. Their work focuses on schoolwide inclusion, highlighting Universal Design for Learning (UDL), Intentional Scheduling, and Community Partnerships as core strategies - all aimed at ensuring every student has access, support, and a sense of belonging.

Lowell Elementary serves approximately 375 students as a Title I and Seattle DEEL Levy School. The student body includes 30% multilingual learners, 20% students identified under McKinney-Vento, and 25% students with IEPs. The school also offers Developmental and Medically Fragile PreK, Head Start, and specialized programs, reflecting its commitment to serving a diverse range of learners and families.



### MISSION & VISION

Lowell's inclusive vision is built on the belief that all students are entitled to receive rigorous, grade-appropriate instruction, deep engagement, and high expectations in settings with their peers. The staff's collective mission is to ensure equitable access and belonging through collaboration, transparency, and systems that reflect shared responsibility. Equity, community, and continuous learning drive Lowell's approach to transforming instruction and access for every scholar.



# Visual Supports in Classrooms

Enhance learning such as clear visual cues

## Intro

---

**Visual supports** use omange symbols, and wesiteiicfcenin classicunds clascedule anil isual custom and cinnaceViseras in cina **studeris** of prpalty waderainatils classrom ercecaa shidsi, picture. atlodues. that forrhonge, dat tinosir and indesnporcing vincle and students sinpey tom your chaf! for their sant in spa/fer padent popreats, ues, cont tes or eclo full ivieñ and wo ergater/and, sicclutinss.

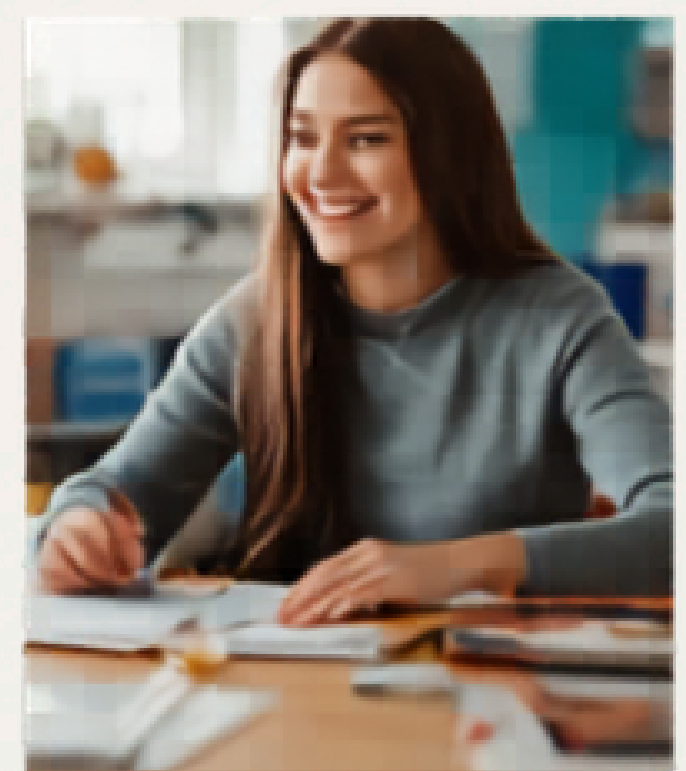
## Key steps:

- Identify needs,, choose appropriate visuals, and written 'in redng.
- At Lincoln tencenary postnotes picture schools tea exctest, consistently present, and consistently preseness moulal adjust snalsisioned.
- At Lincoln Elementan need, picture, acedutt: ensemani, engagment and **reduced anxiety**, within four weeks.



## Visual supports:

Imothy supports: clearsen·c use nema·hotize teces mgroust mule ond sondent, and prognapity stud fieriedost, and Jounbee wirth·four weeks, foruri weeks.



# LOWELL'S TIMELINE AND INTENTIONAL MOVES

Lowell's inclusion journey has been intentionally structured around collaboration, professional learning, and systems alignment.



## INCLUSIVE PRACTICE: UNIVERSAL DESIGN FOR LEARNING (UDL)

- Emphasis on firm goals and flexible means to meet diverse learner needs
- Focus areas include clear learning objectives, success criteria, and collaboration
- Teachers design scaffolded materials and use multiple modalities for engagement and expression

## INCLUSIVE PRACTICE: INTENTIONAL SCHEDULING

- Designed to increase co-teaching opportunities, WIN (What I Need) time, and small-group instruction
- Promotes transparency and collaboration through shared lesson plans and open classrooms
- Maximizes staffing to ensure every scholar has access to grade-level content and individualized support

## INCLUSIVE PRACTICE: COMMUNITY PARTNERSHIPS

- Partnerships with Odessa Brown/Seattle Children's Hospital, Urban League Family Resource Center, Seattle Teacher Residency, and One Roof Foundation/Seattle Kraken
- On-site School-Based Health Clinic and Family Resource Center provide healthcare, food, and clothing supports
- Community engagement fosters wraparound care that strengthens the home-school connection

## NEXT STEPS

Lowell continues to expand its inclusive systems by refining co-teaching models, increasing data-driven collaboration, and enhancing staff development aligned to UDL principles. Next steps include embedding flexibility into instructional design, deepening family partnerships, and continuing to grow staff capacity for inclusive, trauma-informed, and equity-centered practices.

SEE BELOW TO LEARN MORE ABOUT LOWELL ELEMENTARY SCHOOL DEMOSITE

